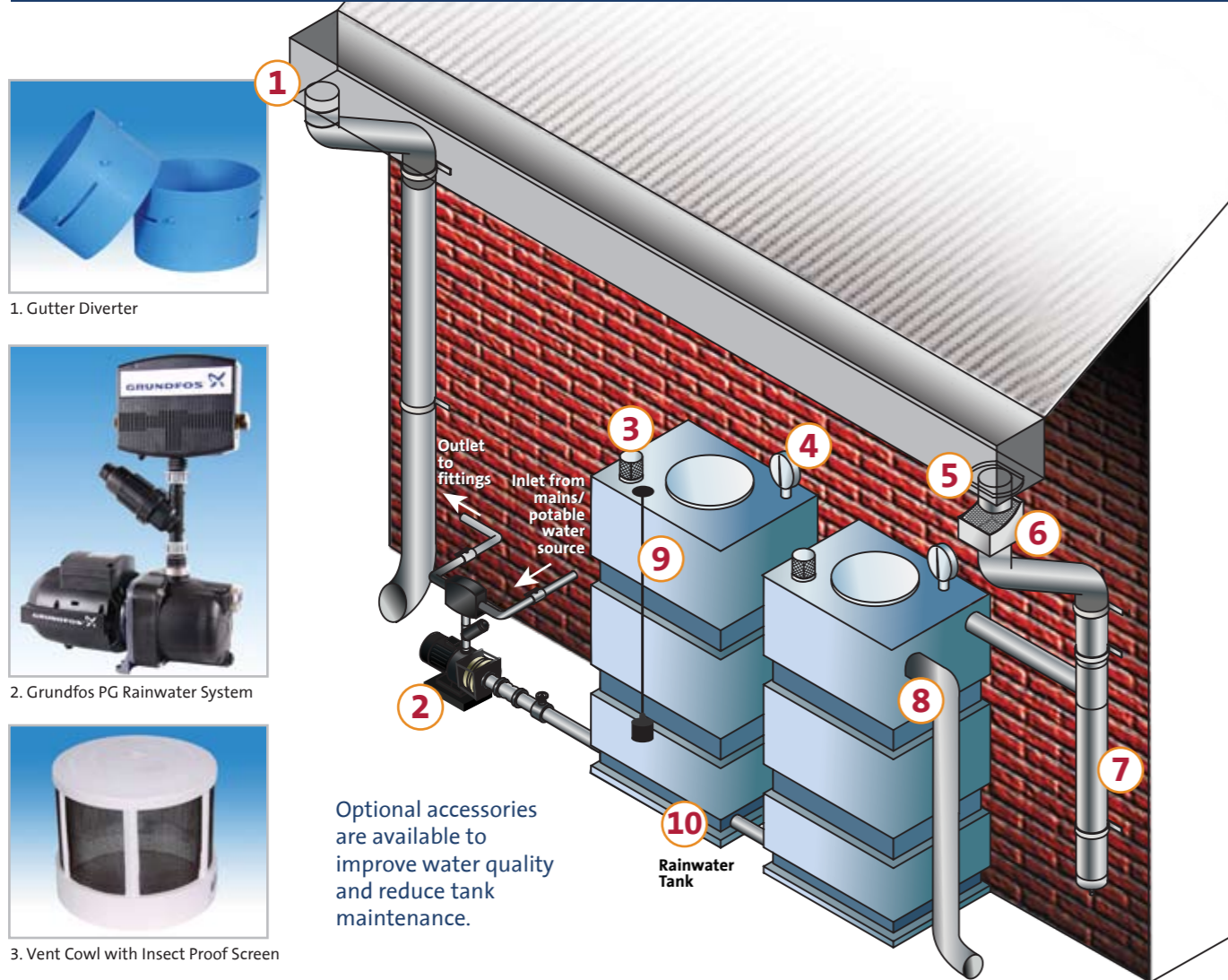


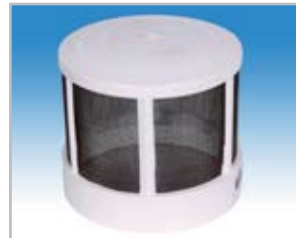
COMPLETE RAINWATER HARVESTING SYSTEM AND ACCESSORIES AVAILABLE



1. Gutter Diverter



2. Grundfos PG Rainwater System



3. Vent Cowl with Insect Proof Screen



4. Tank Level Gauge



6. Leaf Eater



8. Mozza Stoppa Screen



9. Sinker Float Sensor



7. First Flush Diverter



5. Gutter Outlet

Optional accessories are available to improve water quality and reduce tank maintenance.

Authorised Dealer:

GRUNDFOS PUMPS SDN BHD (202527-A)
 7, Jalan Peguam U1/25
 Glenmarie Industrial Park
 40150 Shah Alam, Selangor,
 Malaysia.
 Tel : +603-5569 2922
 Fax : +603-5569 2866
 E-mail: gfosmy1@grundfos.com

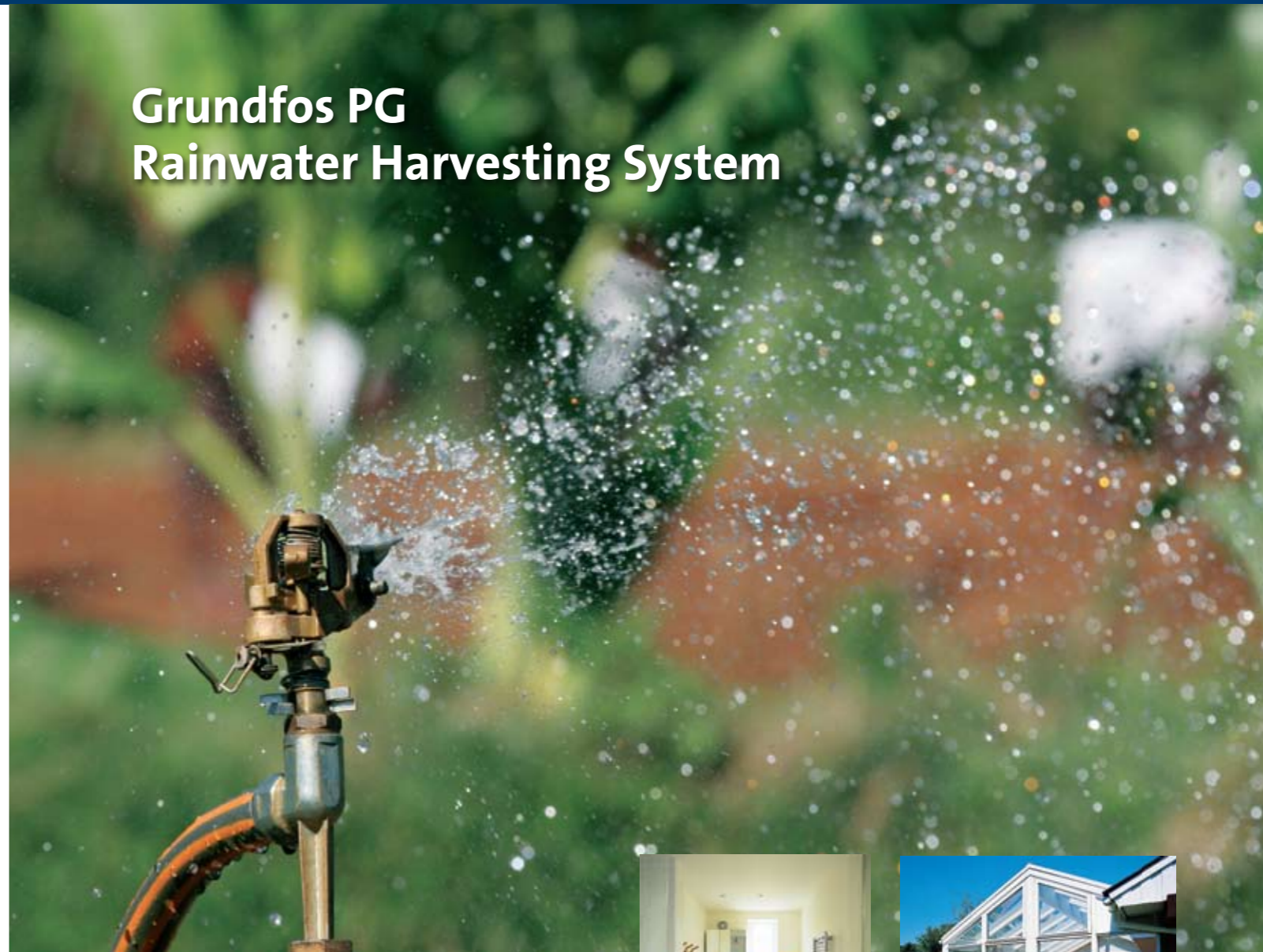


**Branch Office
 Northern & East Coast**
 10, Ground Floor,
 Jalan Todak 4, Bandar Sunway,
 13700 Seberang Jaya,
 Penang
 Tel : +604-818 3779
 Fax : +604-818 3848

East Malaysia
 Lot 8, Lorong Industri Warisan 1,
 Taman Industri Warisan Indah,
 Mile 7, Old Tuaran Road
 88450 Inanam, Kota Kinabalu,
 Sabah
 Tel : +6088-380 663/-383 663
 Fax : +6088-383 621



Grundfos PG Rainwater Harvesting System



Enjoy endless water supply while making use of your rainwater harvesting system

BE > THINK > INNOVATE >



Applications

The Grundfos PG is an interconnect device that allows you to save precious drinking water by using your harvested rainwater for toilet and garden applications.

Always prioritizing the use of rainwater, the PG will automatically switch over to a mains water source when your rainwater tank runs low, or during electrical failure.

The pump itself is only active when the rainwater is being drawn from the tank. It does not operate when the PG has switched to mains water. The pump controller automatically starts and stops the pump when a demand is sensed – for example, flushing a toilet or operating the garden tap.

Features

- Easy to install
- Does not require any regular maintenance
- In-built dual check valve for backflow prevention
- Automatically switches to mains water in the event of a power or pump failure
- 10 m Rainwater tank sinker float sensor

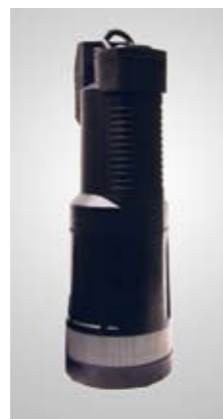
Various Pumps With PG

The PG can be coupled with different types of Grundfos pumps to suit the various applications:

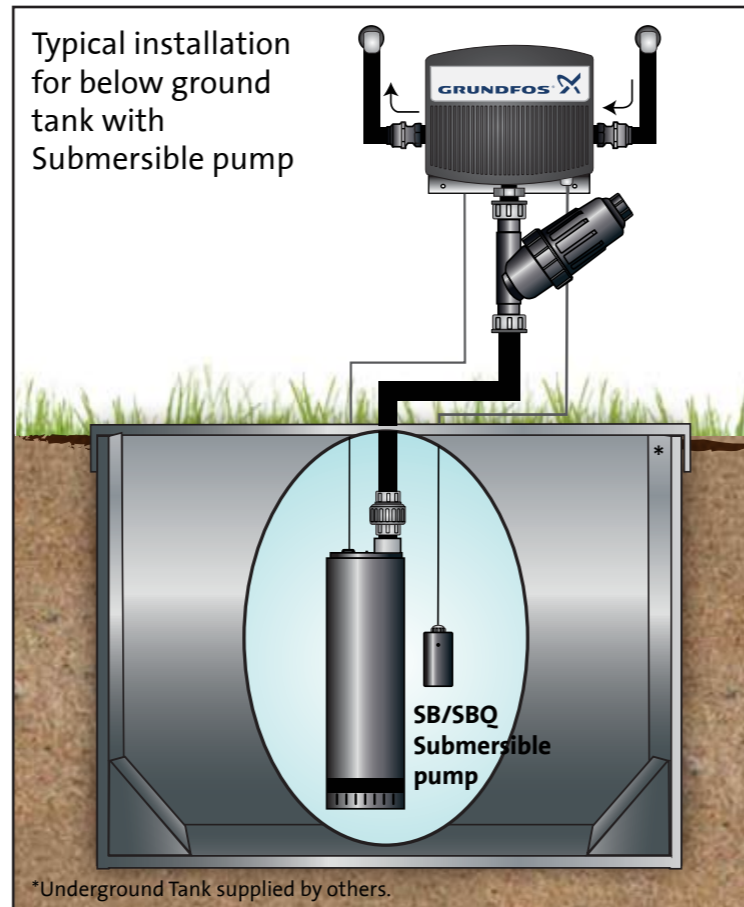
- CM Horizontal Multistage Non-Self Priming pumps
- JP Rain Self-Priming pumps
- SB/SBQ Submersible pumps



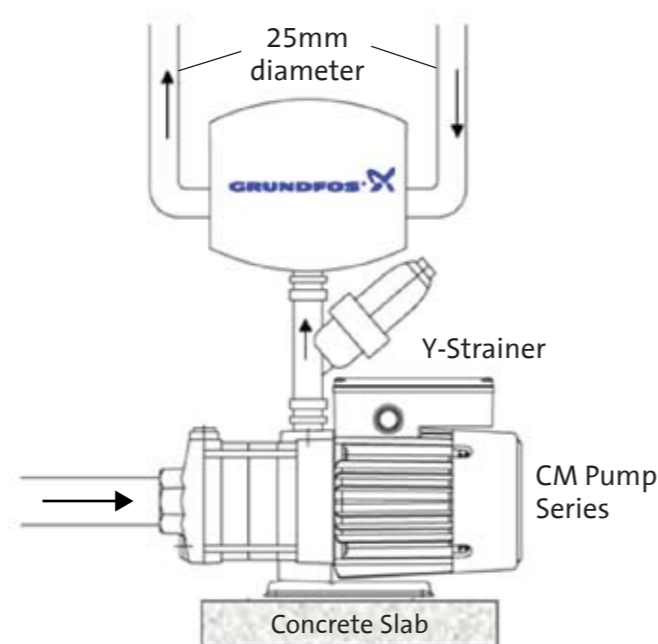
JP Rain pump



SB/SBQ Submersible pump



*Underground Tank supplied by others.



Typical PG with CM Pump

Technical Data

- Max. flow Rate (mains) : 60 lit/min
- Max. flow Rate (pump) : As provided by the pump
- Max. mains water pressure : 600 kPa
- Max pump pressure : < 600 kPa
- Max. water temperature : 50°C continuous
- Min operating temperature : -5°C
- Mains water inlet size : 3/4" BSP(F) via dual check valve
- Electrical data : 1ph/240V/50Hz

Model	Power kW	Maximum Operating Flow Rate m3/hr	Maximum Operating Head bar	Enclosure Class
PG CM1-6	0.50	2.4	4.5	IP 44
PG CM3-5	0.50	4.2	4.1	IP 44
PG JP Rain 3	0.77	3.2	4.0	IP 44
PG JP Rain 4	1.04	3.0	4.5	IP 44
PG SB/SBQ	0.9	5.4	3.5	IP 68

Dimensions and Weight

Model	Suction mm	Discharge mm	Length mm	Width mm	Height mm	Weight kg
PG CM1-6	25	25	350	140	610	16
PG CM3-5	25	25	440	145	610	21
PG JP Rain 3	25	25	410	270	640	20
PG JP Rain 4	25	25	440	270	640	21
PG SB/SBQ (pump only)	-	25	150	150	450	11

Rainwater Collection Tank

The wall tank is a rainwater storage tank for domestic use, designed to fit close to the wall.

- Capacity of 720 litres each.
- Supplied with a metal safety bracket for wall mounting
- Inlet options located on top or side of the tank.
- Inlets are flexible and can be positioned anywhere depending on the layout of your system.

Features:

- UV-resistant made from durable HDPE material.
- Manufactured using latest rotational moulding equipment which ensures even and controlled tank wall thickness for maximum strength and shape stability.
- Space saving.
- Connections are internal threaded durable metal inserts.
- Modular design allows for 2 or more tanks to be connected together.



* Dimension : 800(L) x 500(W) x 1800(H) mm each
Tank Color Options :