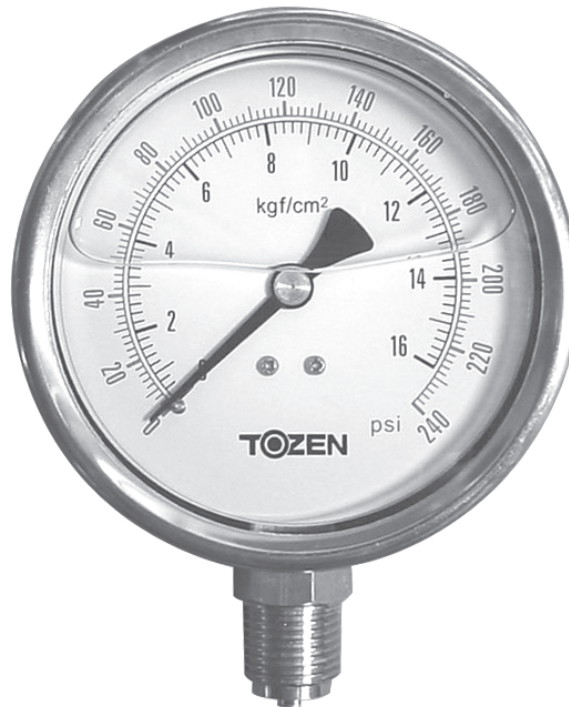


STAINLESS STEEL PRESSURE GAUGE - SP SERIES

TOZEN SP series stainless steel casing pressure gauge is designed and used for pressure measurement for various industries. This durable gauge is ideal for services on water, air, oil and other pressure media.



SPECIFICATION

Nominal Diameter	2½" (65mm), 4" (100mm)
Dial	White aluminium with black & red markings
Case	Stainless Steel 304
Lens	Polycarbonate
Pointer	Aluminium, Painted Black
Socket	Brass, Stainless Steel 304
Connection	¼" (2½" Dial), ⅜" (4" Dial Brass Socket). ½" (4" Dial Stainless Steel Socket) BSP Bottom Entry
Movement	Brass, Stainless Steel 304
Operating Pressure	75% of Full Scale Value
Ambient Temperature	-10°C to 60°C
Protection	IP 65

PRODUCT CODE

Range	Product Code
-760mm/HG ~ 4kgf/cm ² / psi	SPC4CA
0 ~ 7kgf/cm ² / psi	SP07CA
0 ~ 10kgf/cm ² / psi	SP010CA
0 ~ 16kgf/cm ² / psi	SP016CA
0 ~ 20kgf/cm ² / psi	SP020CA

Other range and unit available upon request.

Specifications are subject to change without prior notice.